

# Energy Assistance

Programa de asistencia de energía

The Access Energy Program  
is here to help Connecticut's  
low-income households.

El programa de energía de Access está  
aquí para ayudar a hogares de bajos  
ingresos en Connecticut.

Due to the current COVID-19 crisis all applications for energy assistance will be completed over the phone. We will not have any in-person appointments. After completing the application, a list of documentation will be mailed to the applicant and they will have 10 days to return the documentation either by mail, fax, email, or it can be dropped off at Willimantic or Danielson in a designated drop box. There will be no scheduled appointments. To make sure your application is completed you will need to provide a working telephone number in order for an Intake Tech to call. Anyone entering the building will need to wear a mask and keep social distance. We are determined to keep each energy assistance customer and our staff safe.

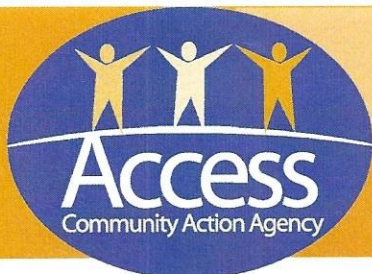
Debido a la crisis actual de COVID-19, todas las solicitudes de asistencia energética se completarán por teléfono. No tendremos citas en persona. Después de completar la solicitud, se enviará por correo una lista de documentación al solicitante y tendrán 10 días para devolver la documentación por correo, fax, correo electrónico, o se puede dejar en Willimantic o Danielson en un buzón designado. No habrá citas programadas. Para asegurarse de que su solicitud esté completa, deberá proporcionar un número de teléfono que funcione para que un técnico de admisión pueda llamar. Cualquier persona que ingrese al edificio deberá usar una máscara y mantener la distancia social. Estamos decididos a mantener seguros a cada cliente de asistencia energética y a nuestro personal.

NEED HELP PAYING  
YOUR WINTER HEATING BILLS?  
¿NECESITA AYUDA PARA  
PAGAR SUS FACTURAS DE  
CALEFACCIÓN DE INVIERNO?

## Serving all of Windham & Tolland Counties:

## Sirviendo a todos los condados de Windham & Tolland:

Andover	Ellington	Stafford
Ashford	Hampton	Sterling
Bolton	Hebron	Thompson
Brooklyn	Killingly	Tolland
Canterbury	Mansfield	Union
Chaplin	Plainfield	Vernon
Columbia	Pomfret	Willington
Coventry	Putnam	Windham
Eastford	Scotland	Woodstock
	Somers	



Asistencia de energía es un programa de Agencia de Acción Comunitaria de Access.

[www.accessagency.org](http://www.accessagency.org)

Llama al (860) 450-7400 en Willimantic o (860) 412-1600 en Danielson.

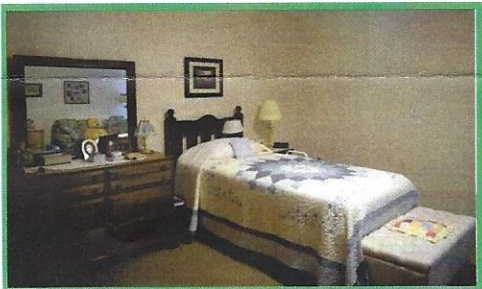
Willimantic: 1315 Main Street, Suite 2, Willimantic, CT 06226, (860) 450-7400

Danielson: 231 Broad Street, Danielson, CT 06239, (860) 412-1600



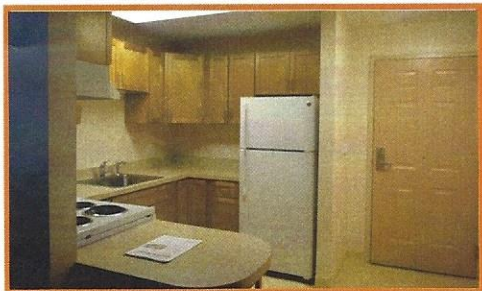
Are you at least 62 years old and looking for a new, safe, affordable apartment to live in?

Then come to **Access Housing at Parker Place: Affordable Senior Housing**

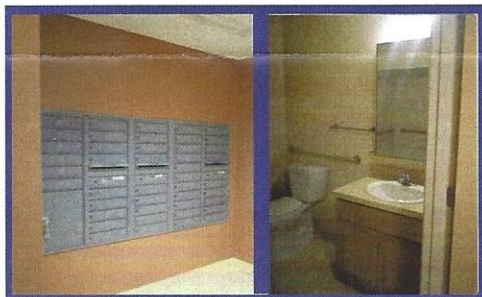


100 Old Post Road, Tolland, CT  
[Parker-place.org](http://Parker-place.org)

Conveniently located next to the Tolland Senior Services, Recreation Center and the Library

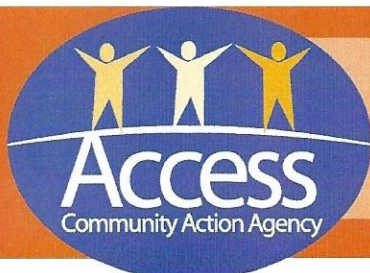


Immediate 1 and 2 bedroom Income eligible apartment openings available. Income eligible units are set aside for seniors, 62 years old or older, that meet 25%, 30%, 50%, & 60% of AMI



Includes common areas equipped with a full kitchen, laundry rooms, roll-in showers, HVAC heating and cooling system, cable ready, maintenance emergencies 24/7, tenant's storage room, controlled entry system, pets welcome

For more information call today: **860-454-4300**



[www.accessagency.org](http://www.accessagency.org)

Willimantic: 1315 Main Street, Suite 2, Willimantic, CT 06226, (860) 450-7400  
Danielson: 231 Broad Street, Danielson, CT 06239, (860) 412-1600



Gregory Haddad  
Board Chair

Peter S. DeBiasi  
President/CEO

September 17, 2020

First Selectman Cahill  
P.O. Box 143  
Hampton, CT 06247

Dear Mr. Cahill,

Access Community Action Agency is very happy to inform you that our new Senior Housing Development: *Access Housing at Parker Place* is now accepting applications for 1 and 2 bedroom apartments in Tolland, CT. Income eligible units are set aside for Seniors, 62 years old or older, that meet 25%, 30%, 50%, & 60% of AMI.

Parker Place is located in Tolland, CT on 100 Old Post Road conveniently located next to the Tolland Senior Services, Recreation Center and the Library. Parker Place includes common areas equipped with a full kitchen, laundry rooms, roll-in showers, HVAC heating and cooling system, cable ready, maintenance emergencies 24/7, tenant's storage room, controlled entry systems, courtyard areas for residents to have outdoor activities, and pets are welcome.

Check out [Parker-Place.org](http://Parker-Place.org) or call (860) 454-4300 for more information and to schedule a tour.

